

Technical Support Article



Article Number - 00029-2012

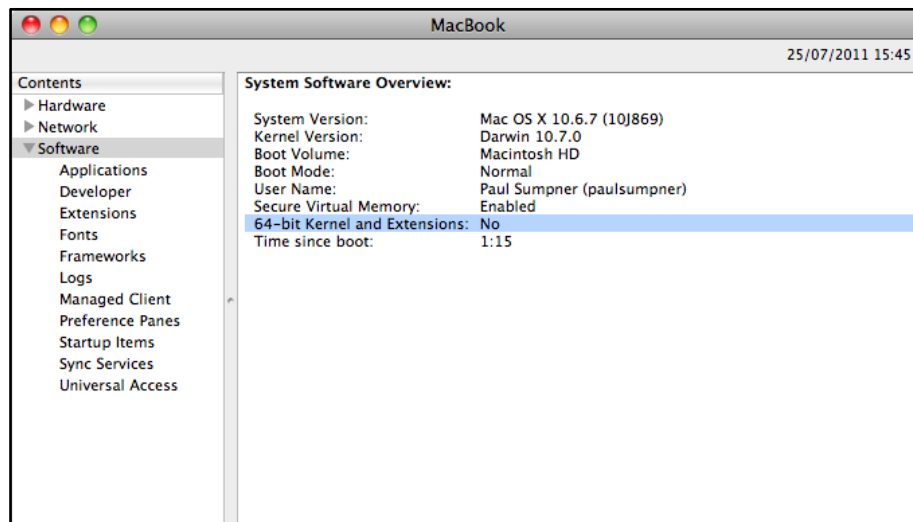
Date - 2nd Feb 2012

Article applies to - WL50 (MK2) and WL400 Wifi Adaptor

ISSUE: Installing a WL50 (MK2) or WL400 on Mac OS X 10.7 (Lion)

To install the Realtek RTL8187L drivers and Wifi Utility on a Mac with OS X 10.7 or higher, it is necessary to make sure that the Mac is running in 32bit Kernel Mode, as Realtek, whose RTL8187L chipset we use in these products do not have a 64bit driver for Macs.

To confirm if you are in 32bit or 64bit Kernel mode, run the System Information App in the Utilities folder on your Mac. You will need to click on the Software section in the left hand column and then you should see the screen below and you are looking for "No" in the 64-bit Kernel and Extensions....

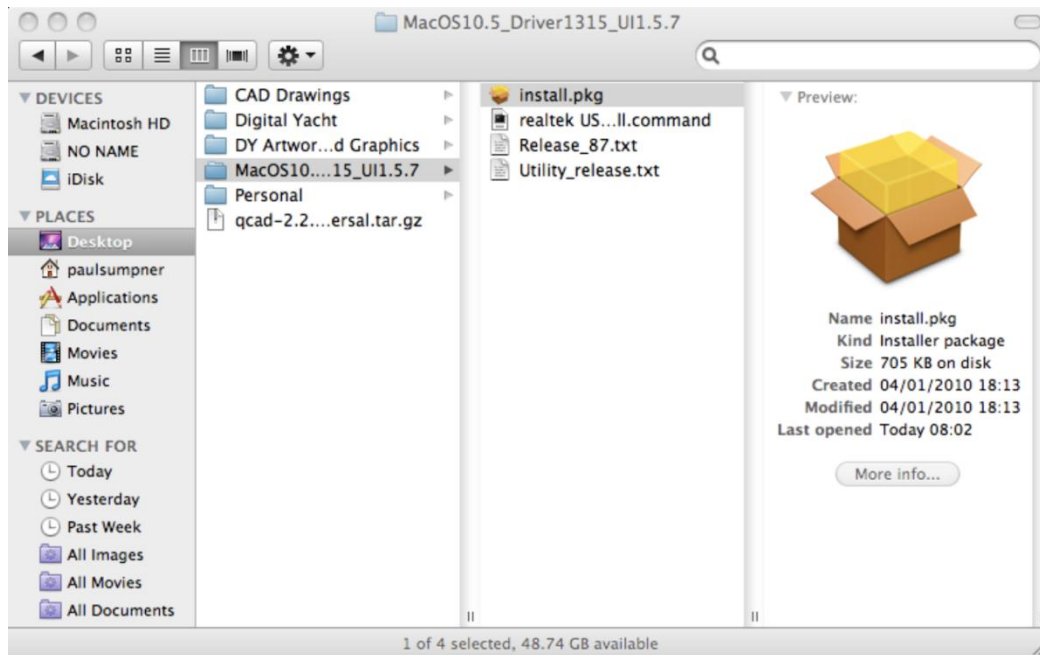


If it "Yes", you are running in 64bit kernel mode and it will be necessary to reboot in 32bit mode.

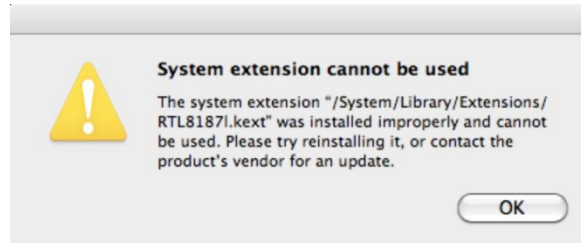
You can selectively boot a Mac in 32bit or 64bit mode by pressing either the "3"+"2" keys when booting or "6"+"4" keys when booting....see this Apple Support note...

<http://support.apple.com/kb/HT3773>

install the OS X 10.5 package supplied with the WL400. To install the drivers simply double click on the “install.pkg” file and follow the instructions displayed on the screen.

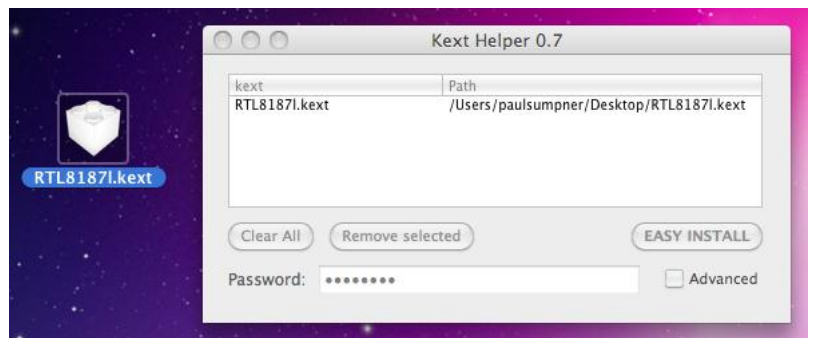


During the installation process you will see the window shown below which pops up to say that the driver file has not installed properly. Press OK and the installer will finish successfully and you must then restart the computer.

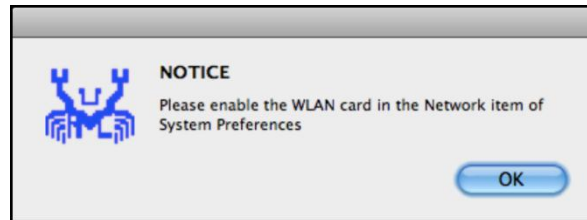


These drivers actually work perfectly on OS X 10.6, but the installer sets the wrong owner/permissions for the RTL8187L.kext file (driver) and it is necessary to follow the step by step guide below;

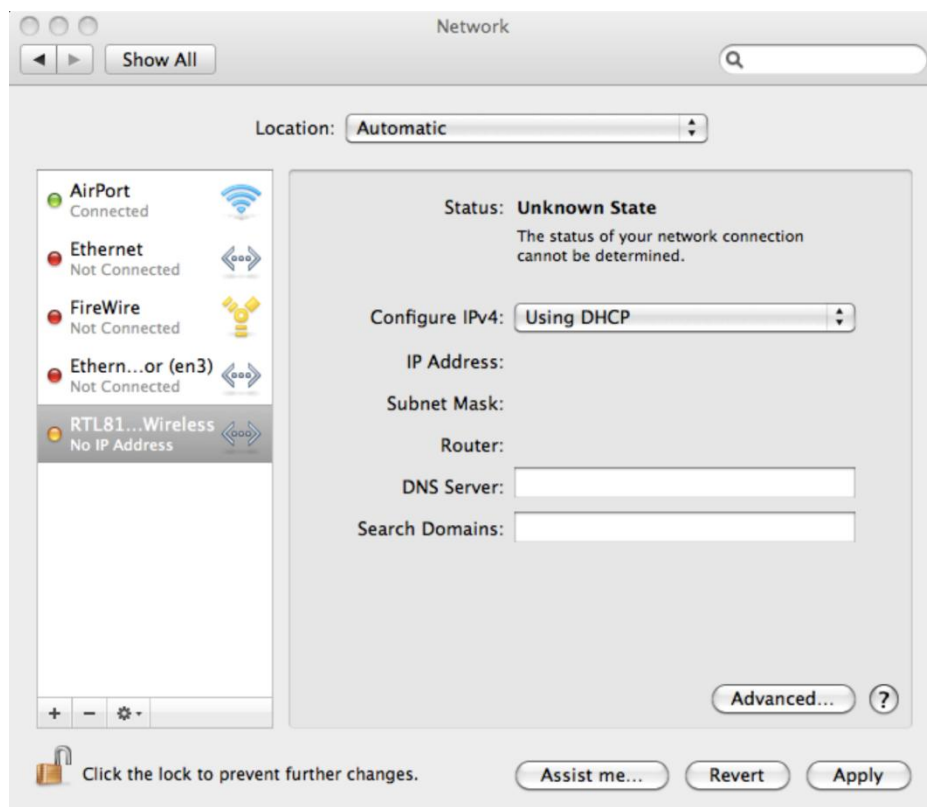
- 1) Locate the incorrectly installed file RTL8187L.kext file which should be found in the “/System/Library/Extensions” folder and place it in the Trash
- 2) Run the application “Kext Helper b7”, which is on the Digital Yacht Software CD, then click and drag the RTL8187L.kext file (on the CD) into the white box on the Kext Helper window



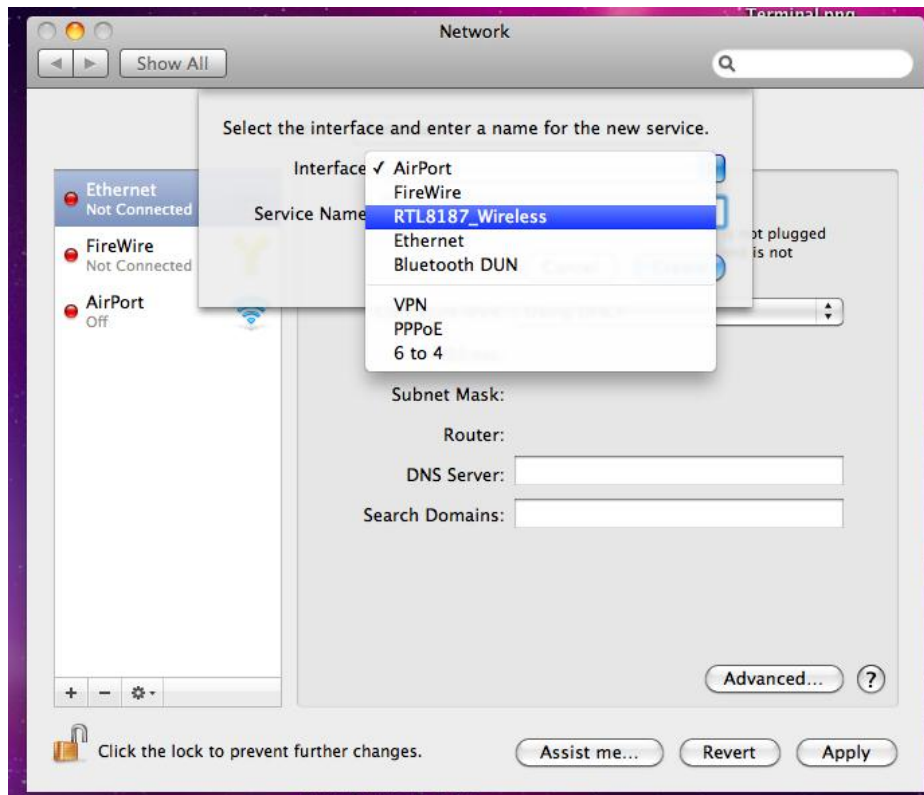
- 3) Enter your admin password and click the “EASY INSTALL” button, the Kext Helper program should then successfully install the RTL8187L.kext driver file and ask you to reboot
- 4) After you have rebooted, plug in the WL400. You should see the following window pop-up



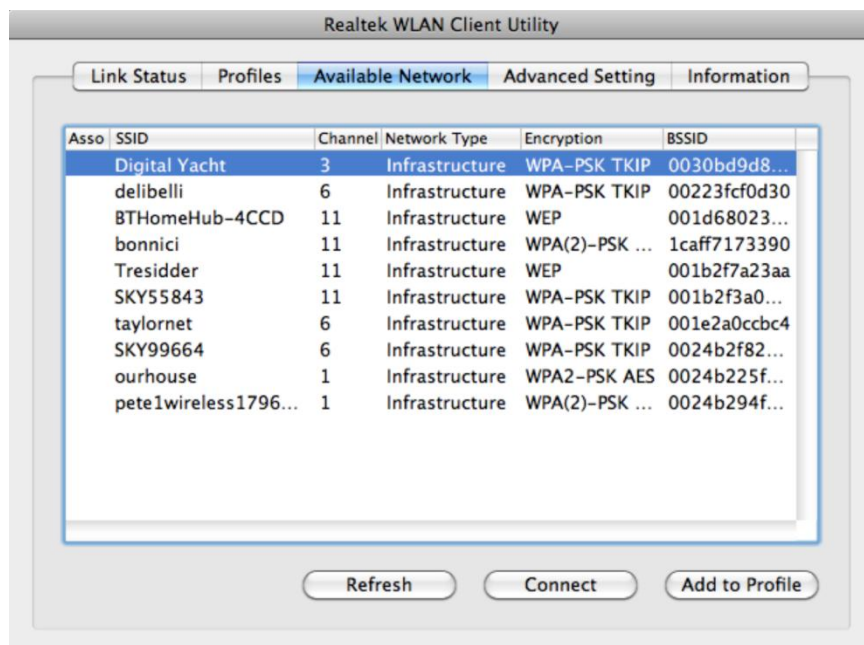
- 5) Click “OK” and go to Network in the System Preferences
- 6) If you see the window shown below click the apply button and skip to step 9



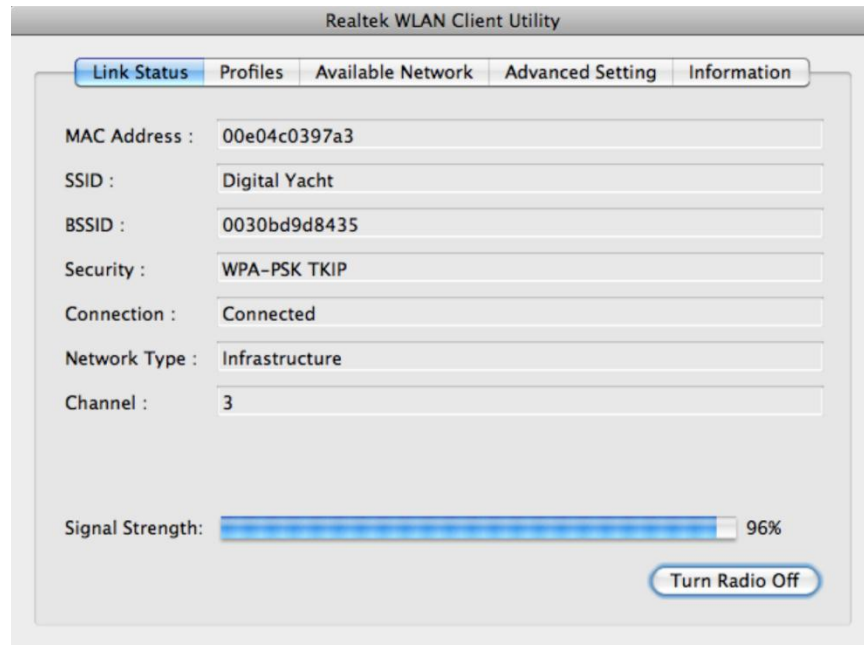
- 7) If the window is not exactly as shown below and the RTL8187L Wireless adaptor is not shown in the left hand list of available network devices, then you will have to manually select it
- 8) Click on the Lock, enter your admin password again and then click on the + sign to add a new network device. Select the RTL8187L from the drop down list of adaptors (see image shown on the following page) and click “Create”.



- 9) You may wish to setup a new location called “On the Boat” or “WL400” which you select when you want to use the WL400. Set the network preferences for this location so that Airport is turned off and the RTL8187L Wireless Adaptor is the preferred connection.
- 10) To connect to a Wireless Network now, you will need to use the Realtek Wifi Client Utility – blue Crab like symbol in the dock. When you run this utility, you can click on the Available Network tab and select which Wifi Hotspot you wish to connect to



- 11) If it is an encrypted connection, you will then be asked to enter the passkey. Once connected, you will see the window shown below.



- 12) If you wish to save the connection details so that the WL500 automatically connects without asking for the passkey each time, click on the "Available Network" tab and then click the "Add to Profile" button.